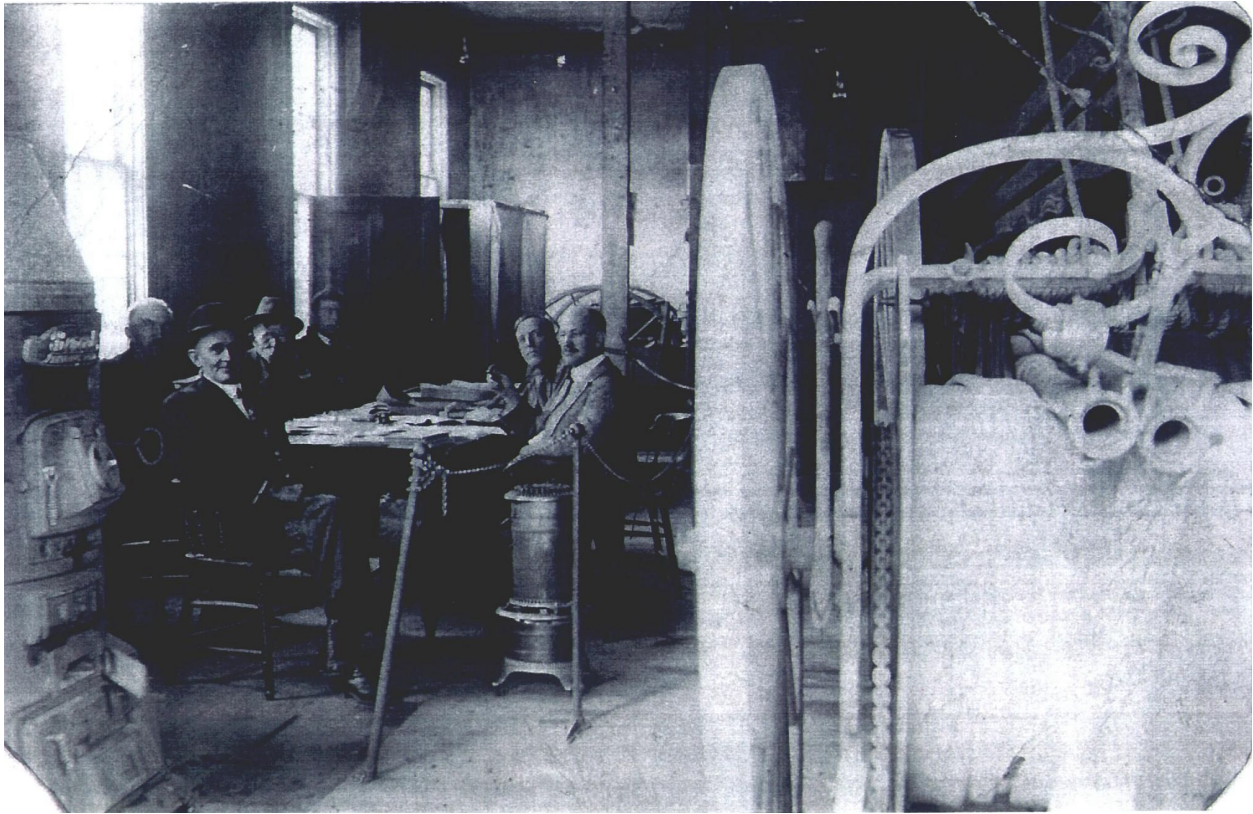


## HOSE CARTS



Included in this picture are both hose carts (one is in back left corner of building) and the Buckley & Merritt Hook and Ladder Truck. Members seated at the table include Billy Sears (left-middle), George Livingston (front) and Frank Keller (right)

Two hose carts were purchased at the same time as the Silsby Steamer. Each cart carried 500 feet of rubber hose and weighed almost a ton. The carts were pulled by hand along with the steamer to the nearest water supply. There were many hose failures early on and the rubber hose was replaced with leather hose in 1874. The new leather hose required special attention by rubbing it by hand with hot tallow and crude oil.