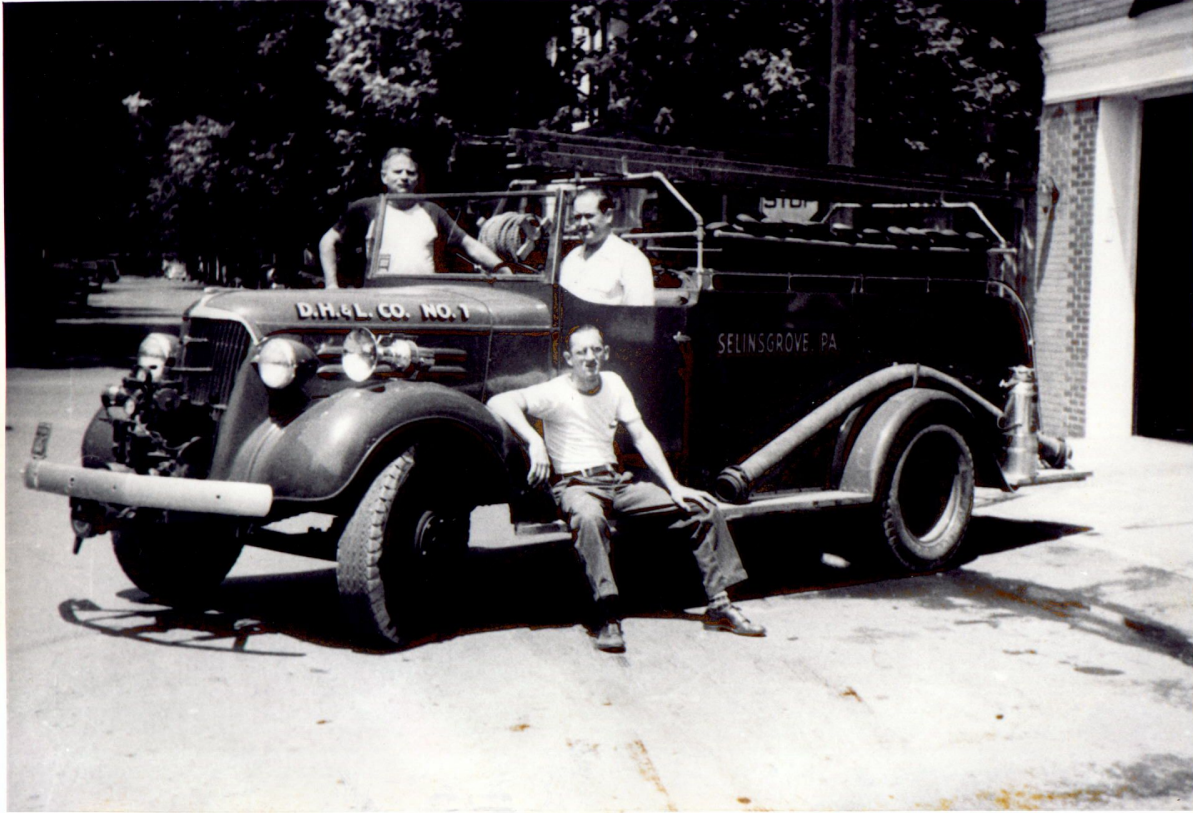


## 1937 CHEVY



Pictured are driver Ted Salter, Ralph Wagner standing and George Haas sitting.

The Chevy, titled to the fire company on May 21, 1947, was originally a police patrol car used by the Fire Police to pick up members enroute to fires.

The Chevy was refurbished and a 200-gallon water tank and a ladder rack were added. Additionally a 500-gpm pump was added to the front bumper.

The company began looking for a replacement for the Chevy in 1968 because it no longer met the standards set by the National Board of Fire Underwriters.